

Wallpaper*

AUGUST 2017

*THE STUFF THAT REFINES YOU

UK £7.00
 US \$11.00
 AUS \$11.99
 CDN \$11.00
 DKK 80.00
 FR €10.00
 DE €12.50
 ITA €10.00
 JPN ¥2000
 SGP \$21.00
 ES €10.00
 CHF 17.00
 AED 55.00



LOVE RUG
CRAIG GREEN'S CEREMONIAL CARPET

WHAAM!

MIGHTY THREAD
THE BOUROLLECS
TAKE THE VEIL

THE POWER OF TEN
YVES BÉHAR'S
NEW COMMANDMENTS

HOLY HANDMADE

KAPOW!

Dynamic duos and divine design

FIRE STARTER
ANDRÉ FU'S
ETERNAL FLAME

CARE TACTICS
MATTEO THUN'S
MAINTENANCE KIT

GRAVE CULTURE
TOM DIXON GOES
SIX FEET UNDER

PEACE CAMP
FRANCESCO LIBRIZZI'S SACRED SPACE



Volcanic altars
Tasty tabernacles
Ambient teas
Funeral biscuits
Infinity tables
Stairways to heaven

BOOM!

CONTRIBUTORS



MATTEO THUN ▲
Architect and designer

'The baby is born the right way,' declared Matteo Thun the moment he saw the first prototype of his 'Immaculate Care' case, a kit for the perfectly groomed gentleman (page 090). He was meeting his Handmade collaborator Alessandro Sartori, artistic director at Ermenegildo Zegna, and our own Nick Vinson back in February, and deemed no amendments were required. After his successful delivery, next up for Thun is a wellness destination in Switzerland.



KAREN CHEKERDJIAN ▲
Designer

Lebanese designer Karen Chekerdjian works from a new 6,500 sq ft studio and gallery in Beirut's Bourj Hammoud, creating objects that are at once austere and graceful. Her style is apparent in the geometric 'Infinity' table (page 175), which she created for us with terrazzo specialist Grandinetti, based on an abstract Zen painting of the universe. Chekerdjian currently has designs on show as part of 'Free Play' at Santa Barbara's Contemporary Art Museum and 'Sur/face' at Frankfurt's Museum Angewandte Kunst.

RONAN & ERWAN BOUROULLEC ▼
Designers

The multi-talented Bouroullecs contributed our limited-edition subscriber cover, the illustrations for this page, and combined digital software with embroidery to create a Handmade showstopper, 'The Veil' (pages 082 and 170), with French masters Lesage Intérieurs. 'Embroidery is an amazing language, with each point making a part of the picture while conveying its own weight and magic,' they say. The duo's recent work includes an installation of outdoor seating, co-produced with Kvadrat, in Aarhus.



YVES BÉHAR ▼
Designer

Fuseproject founder Béhar intends his Ten Commandments of Science (page 048), to be a 'conversation starter on the role of science in decision making'. He wants to shake up the notion of believing: 'Belief has been ascribed a religious connotation. But isn't science a set of beliefs as well? Can we believe in the "book of science"?' One thing Béhar doesn't believe in is sitting still; he's just launched an intelligent office system for Herman Miller, promoting physical activity.



ISABELLE STANISLAS ▲
Interior architect

Based in Paris but passionate about all things Japanese, Stanislas was tasked with reinventing the tea cart (page 154), taking inspiration from the Japanese tea ceremony and working with copper kitchenware maker Mauviel. The challenge, she says, was designing 'an object of contemplation rather than a simple piece of furniture'. Stanislas, who set up her practice in 2001, is working on houses in Ibiza and Comporta, as well as interiors for Château Malromé in Gironde.



TOM DIXON ▲
Designer

The award-winning British designer gave his team a fright when he decided to install a coffin in his staff room - 'Everybody freaked out,' he says, 'which is really a reflection of the symbolic grip that coffins have on the popular imagination.' His team was relieved to learn it was all part of Dixon's project to create a contemporary casket, with Italian company Paper Factor (page 060). In the designer's pipeline, meanwhile, are a transformable bed for Ikea, and interiors for Sydney's Quay Quarter Tower.

EDITOR'S LETTER



Newsstand cover

Photography:
Roger Deckker

Ceremonial rug, by
Craig Green and Stepevi,
created for Wallpaper*
Handmade, see page 076



Limited-edition cover by Ronan & Erwan Bouroullec

Our limited-edition cover was created by the Bouroullecs as part of their Handmade project, 'The Veil', see pages 082 and 170, a collaboration with embroidery masters Lesage Intérieurs

Limited-edition covers are available to subscribers, see Wallpaper.com

Holy Handmade!

At this year's Salone del Mobile, that most sacred of design gatherings, we called the Wallpaper* flock to the Mediateca Santa Teresa, a deconsecrated church on Via della Moscova. And there did true believers, as well as the odd agnostic, enjoy intimate communion with spirit-lifting design and craft at its most transcendent.

This issue bears witness to the divine efforts of our various dynamic design duos and hastily assembled bands of brothers and sisters. From genesis to revelation, we pull back the veil on projects from the Bouroullecs, Tom Dixon, Kostas Murkudis, Sabine Marcelis, Conrad Shawcross, Matteo Thun, Doshi Levien and a multitude more. Here are fonts and sarcophagi, tools for meditation and mindfulness, settings for

'The Portal', by Snøhetta, Erik Jørgensen Møbelfabrik and Everything Elevated, for Wallpaper* Handmade, see pages 052 and 182

See a distilled collection of projects from this issue at Wallpaper* Handmade On Tour 2017 in Singapore, Gillman Barracks, 9 Lock Road, until 31 October

blessed beginnings and suitable send-offs, devotional fixtures and fittings, and simple, elegantly austere sanctuaries for the modern soul.

In all, and rare, seriousness, we hope the spirit of this year's Handmade exhibition, and this issue, is one of calm reflection and communion, entirely inclusive and strictly non-denominational. Salone and Handmade are truly global events, celebrations of cross-border collaboration and friendships forged in the creative act. They recognise that we can still at least hope to make the world, in small ways perhaps, a more civilised and lovely place to be.

Onwards and upwards!
Tony Chambers, Editor-in-Chief

Paper power

The laying of hands on Wallpaper* this month is a touchy-feely revelation. The Handmade Issue is delivered in five superlative stocks courtesy of Finnish producer UPM:

UPM Star 80gsm
UPM Finesse Silk 250gsm
UPM Cote Matt 65gsm
UPM Fine 150gsm
UPM EcoPrime 55gsm



THE 'IMMACULATE CARE' TOTE
INCLUDES A CASHMERE DUSTER,
CLOTHES BRUSHES, SHEEPSKIN
SHOE SHINING MITT, SHOE BRUSH,
WATCH KIT AND SHOE HORN

BLAZER, £3,850; TURTLENECK,
£1,090; TROUSERS (PART OF A
SUIT), £3,260; SHOES, £855, ALL BY
ERMEGILDO ZEGNA COUTURE

Constructed in Ermenegildo Zegna's Pelle Tessuta, an innovative fabric woven from fine strips of nappa calf leather, this case has been designed to organise and manage tools for the rituals of cleaning, maintaining, repairing, caressing and caring for everything in a gentleman's wardrobe. It encourages mindfulness of precious, noble materials and high craft.

Matteo Thun & Partners

Matteo Thun opened his Milan-based practice in 2001. Known for exacting standards in environmental sustainability, the firm works across architecture, interiors and product design for both Italian and international clients. A leader in the hospitality area, the practice is developing a hybrid concept combining wellness, healthcare and hotels. matteothun.com

Ermenegildo Zegna

Founded in 1910 in Trivero, Italy, as a wool mill, Ermenegildo Zegna is now a global powerhouse in the menswear arena, with a fully integrated vertical production process that starts with the Merino sheep. Artistic director Alessandro Sartori oversees a collection of men's tailoring, sportswear, shoes and accessories. zegna.com

Fashion: Jason Hughes, Grooming: Yusuke Morooka at Coffin Inc. Model: Lucas Berry at Wilhelmina



Groom service

'Immaculate Care' case, by Matteo Thun & Partners and Ermenegildo Zegna

PHOTOGRAPHY: MÁTÉ MORO STILL LIFE: PAUL ZAK WRITER: NICK VINSON

Thank you to all our contributors...

We have high praise for the host of divine creators who helped make our Holy Handmade! temple of transcendent design worth the pilgrimage

A

AFSO
Eternal flame
page 193
afso.net

Agape
Meditation table
page 189
agapedesign.it

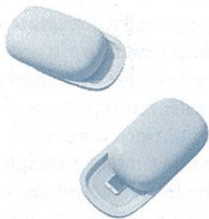


Anne Brandhøj
Funeral biscuits
page 202
annebrandhoej.dk

Architectural Titanium
'Tomorrow, and Tomorrow, and Tomorrow'
page 197
architecturaltitanium.com

B

Bloc Studios
'Divine' diffuser and fragranced oil
page 188
bloc-studios.com



Branch
'Airplane Mode' vessel
page 075
branchcreative.com

C

Concreteworks
'Airplane Mode' vessel
page 075
concreteworks.com

Conrad Shawcross
'Tomorrow, and Tomorrow, and Tomorrow'
page 197
conradshawcross.com

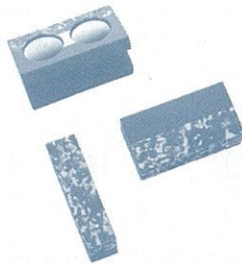


Craig Green
Ceremonial rug
page 076
craig-green.com

Cutler and Gross
'Time Capsule' clutch
page 045
cutlerandgross.com

D

De Castelli
'Sacred Space' pavilion
page 099
decastelli.it



Doshi Levien
'Time Capsule' clutch
page 045
doshilevien.com

Driade
'Solteira' bench
page 194
driade.com

E

Emmemobili
Tabernacle
pages 120 and 180
emmemobili.it



Erik Jørgensen Møbelfabrik
'The Portal'
pages 052 and 182
erik-joergensen.com

Ermenegildo Zegna
'Immaculate Care' case
page 090
zegna.com

Everything Elevated
'The Portal'
pages 052 and 182
everything-elevated.com

F

FAO
'Taking Care of Wild Relatives'
page 148
fao.org



Francesco Librizzi
'Sacred Space' pavilion
page 099
francescolibrizzi.com

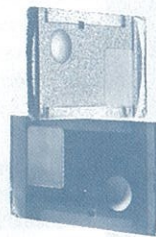
G

Gérard Pigault
'Pocket Ocean' bowl
page 069

Ghidini 1961
Eternal flame
page 193
ghidini1961.com

Giacomo Moor
Tabernacle
pages 120 and 180
giacomomoor.com

Grandinetti
'Infinity' table
page 175
grandinetti.it



Gustav van Treeck
'Meditation Tablet' tray
page 147
hofglasmalerei.de

H

Haeckels
'Divine' diffuser and fragranced oil
page 188
haeckels.co.uk

I

Ichendorf
Tea kit
page 051
ichendorfmilano.com



Ilmor
Kronolisk
page 179
ilmor.co.uk

I'm A Kombo
Funeral biscuits
page 202
imakombo.com

Ini Archibong
'Ritual Calendar'
pages 070 and 196
designbyini.com

Isabelle Stanislas
'Rising Sun' tea cart
pages 154 and 192
so-an.fr

J



Jacqueline Rabun
Trinity of boxes
page 184
jacquelineraun.com

Jamie Fobert Architects
'Dig Deep' offertory bag
page 112
jamiefobertarchitects.com

K

Karen Chekerdjian
'Infinity' table
page 175
karenchekerdjian.com

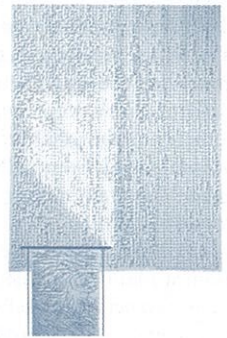


Koleksiyon
'Hyle' lamp
page 047
koleksiyoninternational.com

Kostas Murkudis
'Meditation Tablet' tray
page 147
kostasmurkudis.net

L

Lanserring
Treasure box
page 106

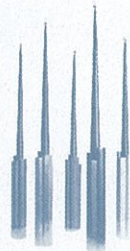


Lesage Intérieurs
'The Veil'
pages 082 and 170
lesageinterieurs.com

Lobmeyr
'Taking Care of Wild Relatives'
page 148
lobmeyr.at

M

Made a Mano
Volcanic altar
pages 114 and 172
madeamano.com



Martin Brudnizki
'Causeway' candleholder
page 178
andobjects.com

Mathieu Lehanneur
'Pocket Ocean' bowl
page 069
mathieulehanneur.fr

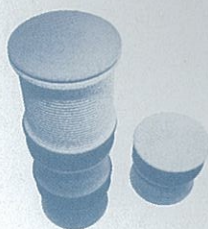
Matteo Thun & Partners
'Immaculate Care' case
page 090
matteothun.com

Mauviel
'Rising Sun' tea cart
pages 154 and 192
mauviel.com



Michaelis Boyd
Candleholder
page 059
michaelisboyd.com

O



Olivier van Herpt
Modular column
pages 092 and 174
oliviervanherpt.com

P

Paper Factor
Sustainable sarcophagus
pages 060 and 186
paperfactor.com



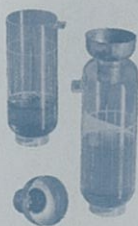
Paul Antonio Scribe
Ten Commandments of Science
page 048
paulantonioscribe.com

Paul Helbers
'Worshipful' wardrobe
pages 100 and 190
helbers.fr

Pedro Paulo Venzon
'Solteira' bench
page 194
pedrovenzon.com

Pemberton & Sons
'Causeway' candleholder
page 178
pembertonandsons.co.uk

Pibamarmi
Monolithic font
page 176
pibamarmi.it



Pietro Russo
Tea kit
page 051
pietrorusso.com

Postcard Teas
Tea kit
page 051
postcardteas.com

R

RDAI
Treasure box
page 106
rdai.fr



Rebus
'Holy Handmade!' signet-ring seal
page 043
rebussignetrings.co.uk

Ronan and Erwan Bouroullec
'The Veil'
pages 082 and 170
bouroullec.com

S

Sabine Marcelis
Volcanic altar
pages 114 and 172
sabinemarcelis.com



Sebastian Herkner
'Taking Care of Wild Relatives'
page 148
sebastianherkner.com

Smallbone
'Worshipful' wardrobe
pages 100 and 190
smallbone.co.uk

Snøhetta
'The Portal'
pages 052 and 182
snøhetta.com

State of Craft
Kronolisk
page 179
stateofcraft.co.uk

Stepevi
Ceremonial rug
page 076
stepevi.com



Studioart
'Dig Deep' offertory bag
page 112
studioart.it

Studiopepe
Meditation table
page 189
studiopepe.info

T

Testi
'Ritual Calendar'
pages 070 and 196
testigroup.eu

The Crucible Foundry
Candleholder
page 059
cruciblefoundry.com

Thierry Dreyfus
'Hyle' lamp
page 047
atelierthierrydreyfus.fr

Tijmen Smeulders
Modular column
pages 092 and 174
tijmensmeulders.nl

Tino Seubert
Monolithic font
page 176
tinoseubert.com



Tom Dixon
Sustainable sarcophagus
pages 060 and 186
tomdixon.net

W

Werkstätte Carl Auböck
Trinity of boxes
page 184
werkstaette-carlauboeck.at

Y

Yves Béhar
Ten Commandments of Science
page 048
fuseproject.com

Wallpaper* Handmade On Tour 2017



NEXT STOP:

Singapore

See our Handmade highlights for yourself. A distilled collection of this year's spirit-lifting designs is on show now in Singapore, thanks to a collaboration with DesignSingapore Council. Ponder Snøhetta's 'Portal', make waves with Mathieu Lehanneur's 'Pocket Ocean' bowl, covet Martin Brudnizki's 'Causeway' candleholder, and much more.

Wallpaper* Handmade
On Tour 2017 in Singapore
Until 31 October
Tuesday to Sunday
12 - 7pm

Gillman Barracks
9 Lock Road, Singapore