



matteo thun adds hospitality aesthetics to waldkliniken healthcare facility in germany

matteo thun & partners has completed the *waldkliniken eisenberg*, the largest orthopaedic center in germany. with the idea of making the patient feel more like a guest, the aim of the design of the healthcare facility and its interiors is to positively influence the relationship between the physical space and the human well-being. hospitalexpert HDR GmbH supported matteo thun and his team in planning and implementing efficiency, functionality and user-friendliness of the new building.



images by gionata xerra



**the *waldkliniken eisenberg* building by matteo thun & partners features a circular structure made of local wood.** hosting 128 patient rooms and 246 beds, the facility is able to accommodate orthopaedic patients after their operations in a building that consciously puts its temporary residents at the center. the concept of *hospitecture* – a combination of hospitality and architecture – has been taken into consideration throughout the design, combining the aesthetics of hospitality projects with those of the healthcare sector.





*'surrounded by forest and with 55 newly planted trees in the direct outdoor area the wooden circular structure of the building puts the material wood at the center,' comments the official release. 'lots of green for the interior and exterior, natural materials, an interplay of inside and outside, a well-considered use of artificial and daylight and color compositions from flora and fauna. the interior concept offers patients the opportunity to withdraw and enjoy their privacy in the Z-shaped two-bed rooms. spacious verandas connect the rooms, all of which face the surrounding nature. rooms, boarding areas, a unit care concept: the interior design ensures transparency – not only to nature outside, but also to the staff inside.'*





adding to the hospitality feeling, the hospital has four different culinary locations – the lobby bar which welcomes visitors and guests and drinks and snacks; la piazza, with 100 seats and views to the inner green courtyard, forms the focal point of the building; the kitchen which offers fresh and healthy local products; and last but not least, the bistro, where employees go for a break and also has a private patient area.





overall, the building is not only stunning but also efficient, functional and user-friendly. adding to this, it was planned according to the 3 zeros concept: zero kilometres – immediate proximity to building materials and use of local skills; zero CO2 – energy management and lower emissions; and zero waste – life cycle management in the construction process and reuse of construction materials.







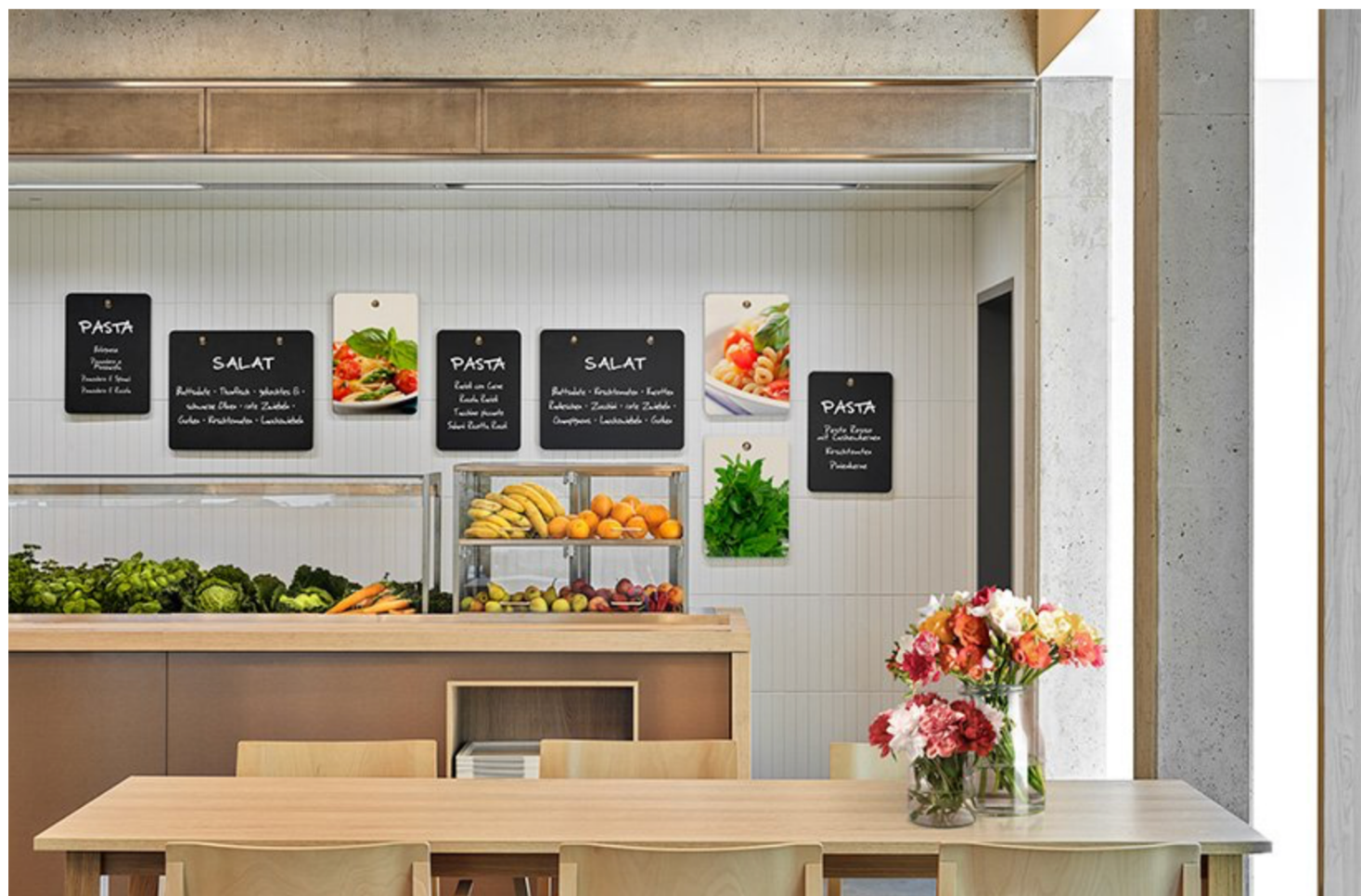
















**project info:**

**name:** waldkliniken eisenberg

**architecture, interior design, lighting design, styling, CI design:** matteo thun & partners

**location:** eisenberg, germany

**chronology:** 2013 – 9.2020

**area:** 16,500 square meters, 66,500 m<sup>3</sup> cubic meters of converted space

[juliana neira | designboom](#)

[oct 28, 2020](#)