

# HOME<sup>®</sup> U S A italia A

GENERAL CONTRACTOR

## LOOKING FOR NATURAL HARMONY

- ACPV ARCHITECTS
- BARACCO+WRIGHT ARCHITECTS
- CLB ARCHITECTS
- CHRISTENSEN & CO. ARCHITECTS
- FARRÉ & COSTA INTERIORS
- GIULIA GEDEONE
- HEIM BALP ARCHITEKTEN
- MICHAEL LECKIE
- MAD ARCHITECTS
- MATTEO THUN & PARTNERS
- NORM ARCHITECTS

7

Jan - June  
2023

USA EDITION

We realize your dreams p. 25

# BAD WIESSEE

**MATTEO THUN & PARTNERS**

*Photography by Jens Weber*

HERE: Main entrance  
with water from the  
local famous fountain.



A SPA BUILDING DESIGNED IN TUNE  
WITH THE SURROUNDING NATURE.  
AS IF THE BOUNDARY BETWEEN INDOORS  
AND OUTDOORS IS CANCELED OUT

**B**ad Wiessee has been a famous health resort on Lake Tegernsee in Southern Germany since 1910 and has a bathhouse ever since. The special composition elements found in iodine (= iodine) and sulfur sources (= sulfur) from Bad Wiessee are very rare and not only preventive, but also extremely effective in the treatment of a number of diseases. The new bathhouse pays homage to the healing power of these springs. The salutogenesis, according to which people regenerate much better and more sustainably in a pleasant environment and the embedding in the surrounding nature determine architecture and interior.

To create individual room sequences that develop more and more private was the approach for the architectural concept: from the street to the forecourt, the *entrée*, the atrium, the bathing cabin and finally the cabin's private terrace. The form of the building itself results from the shape and progression of the room sequences.

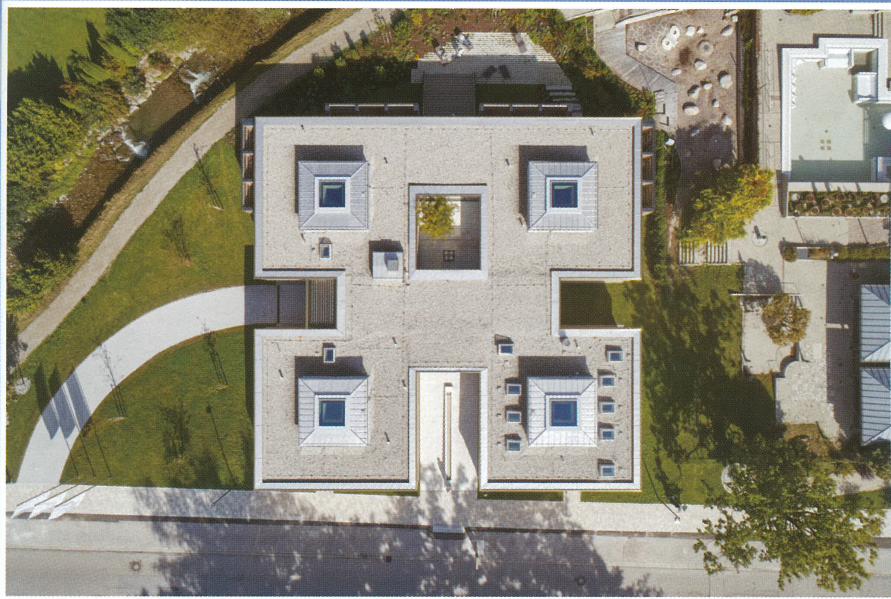
The visitor of Jod Schwefelbad is constantly accompanied by the element of water and nature, the sky is visible everywhere, whereby nature remains an introverted space. Inside and outside are always connected: The bath-house, with its four light-flooded atriums, natural, regional materials such as wood and natural stone, is designed that architecture, light and water create a holistic experience for body and soul. Rooms for medical and wellness applications offer maximum comfort, guarantee privacy and ensure a natural experience with the water of the springs.

The landscape design integrates the existing flora and quotes the natural presence of water in the private terraces of the various treatment rooms. The metal band that completes the building contrasts the silver fir, which will turn irregularly gray over time. For ventilation and cooling of the bathhouse, a special system using the natural, nightly mountain air replaces a conventional air conditioning (form the architects' project report). **H**





**HERE:** Crop of architecture structure - wooden facade - material mix. Under, top view, 4 equal atrium with treatment rooms and Piazza. **BELOW:** Front view with main entrance.



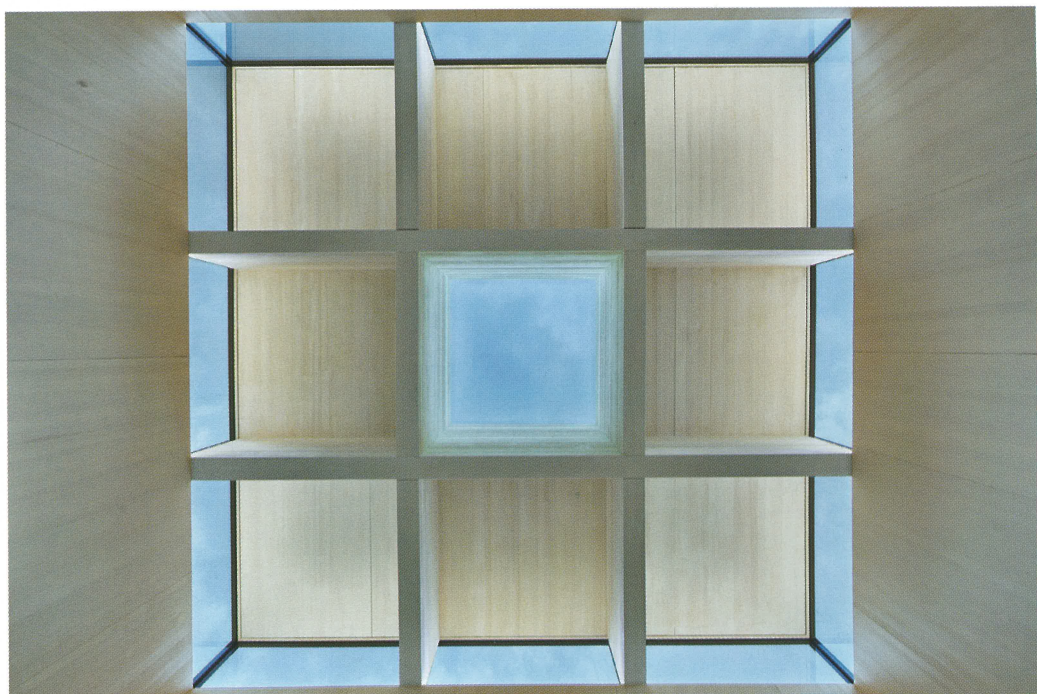




**OPPOSITE PAGE:**  
 Above, The lobby/reception with its two counters, flooded with light. All rooms are filled with the scent of wood

Below, View from reception into the inner garden.

**HERE, CLOCKWISE:**  
 The "Piazza" in the atrium; each atrium is slightly different, illuminated by a ceiling window; the interior of Jod Schwefelbad is a constant dialogue between inside and outside; window ceiling for natural illumination in the atrium.





**HERE:** Treatment room  
Nature heals. All rooms  
have a small terrace with  
a tree. Wooden slats that  
let in light but do not allow  
a view from outside.





# MT

Matteo Thun

**F**ounder and Art Director Matteo Thun leads a new generation of architects and designers in autonomously realising the shared vocabulary of Matteo Thun Milano.

A pupil of Oskar Kokoschka and Emilio Vedova at the Salzburg Academy and graduate of the University of Florence, Matteo's formative professional years were spent under the guardianship of Ettore Sottsass. Together, they co-founded the globally renowned Memphis Group in 1981.

Several years a professor in ceramic design at the Vienna University of Applied Arts and creator of era-defining pieces, Matteo founded his eponymous design studio in 1983 where he would establish himself as one of his generation's most influential voices and talents.

From his headquarters in Milan and Munich, Matteo continues to nurture an architecture and design practice that strives to create respectful solutions through a future orientated lens and a focus on timeless, long-lasting and simple design.

**BLOW  
UP**



WOOD paneling in the interior creates a warm atmosphere.



INNER GARDEN donate relaxing spaces for guests.