


THE WORLD OF INTERIORS

FEBRUARY 2024 USA \$11.99 CAN \$12.99 AUS \$14.99 INTERNATIONAL £5.99



Coups de Théâtre

— A private
opera house
in Belgium

A set designer's
Milanese pad

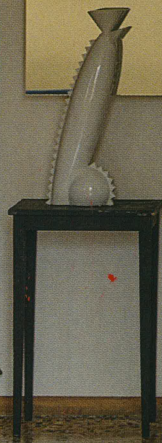
A Venetian
palazzo's
star-studded
balls

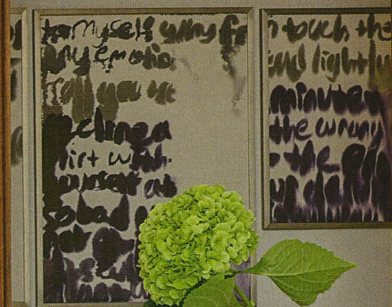
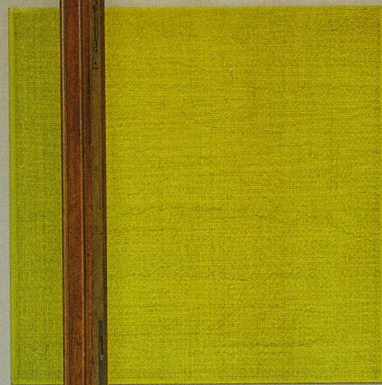


SET IN MOTION

From kinetic sculptures to whirling chairs inspired by an absurdist play, the apartment of theatre director and stage designer Fabio Cherstich has been dressed with the aim to surprise, unsettle and, above all, move whoever encounters it. And no wonder: when you're contending with a building dreamed up by a leading light of Milanese modern architecture, plus a backdrop as dramatic as one of Italy's most ancient churches, you've got to deliver a dynamic performance or risk being roundly upstaged. The animated owner himself discusses his special effects. Photography: Giulio Ghirardi

Fabio Cherstich's set of 'Susprial' chairs by Luigi Serafini serve to remind him of his 2020 theatrical collaboration with the artist in Rome. Hanging above the 'Cavalletto' table, designed by the building's architect, Luigi Caccia Dominioni, is a piece by Mauro Vignando, which the artist created by ramming the painted surface with his shoulder to reveal the silver background







Previous pages: plied, as he recalls, with wine and panettone, Fabio bought the living room's silver bishop bust on a whim from his friends at Copetti Antiquari. A yellow painting by Lucia di Luciano hangs above two 'Nonaro' chairs by the architect – the 'Gelato' sconce by Masanori Umeda is the cherry on top. Above: a Shiro Kuramata table is paired with a sofa upon which the 'Lampada Poltrona' lamp lounges. A Gaetano Pesce pouf accompanies an Etruscan sarcophagus, while a Goshka Macuga sculpture, which she assembled here in the apartment, eclipses a black Augustas Serapinas painting. Anna Franceschini's kinetic sculpture 'The Witness' beckons around the corner. Opposite: a pair of 17th-century wooden statues was an auction find by Alan – possibly part of a Nordic nativity scene. As a Miriam Cahn painting menaces, a Hans Hollein console bears Mario Botta's 'Shogun' lamp, an Alex Katz cutout and Matteo Thun's 'Danubio' vase. Beyond the conjoined Luca Baroni coffee tables, the iron grilles of the balcony stylise the initials of the architect's parents







Opposite: the sprouting mirror/vase is from Riccardo Paratore's aptly named "Magic Mirrors" series – for its next trick, its reflection reveals a series of photographs by Urs Lüthi. The stair-step 'Volga' vase below is by Matteo Thun. Above: the 'Spagnolo' bed is another Caccia Dominioni creation, while the bedspread was handmade by artisans in Tangier. Above it is a work by conceptual artist Tom Burr, while the flanking Chinese red-lacquered tables bear Artemide lamps by Richard Sapper. A Jimmy Wright drawing hangs on the left while to the right, on Fabio's side, are two watercolours by Patrick Angus depicting a sauna and gay club in late 1980s New York